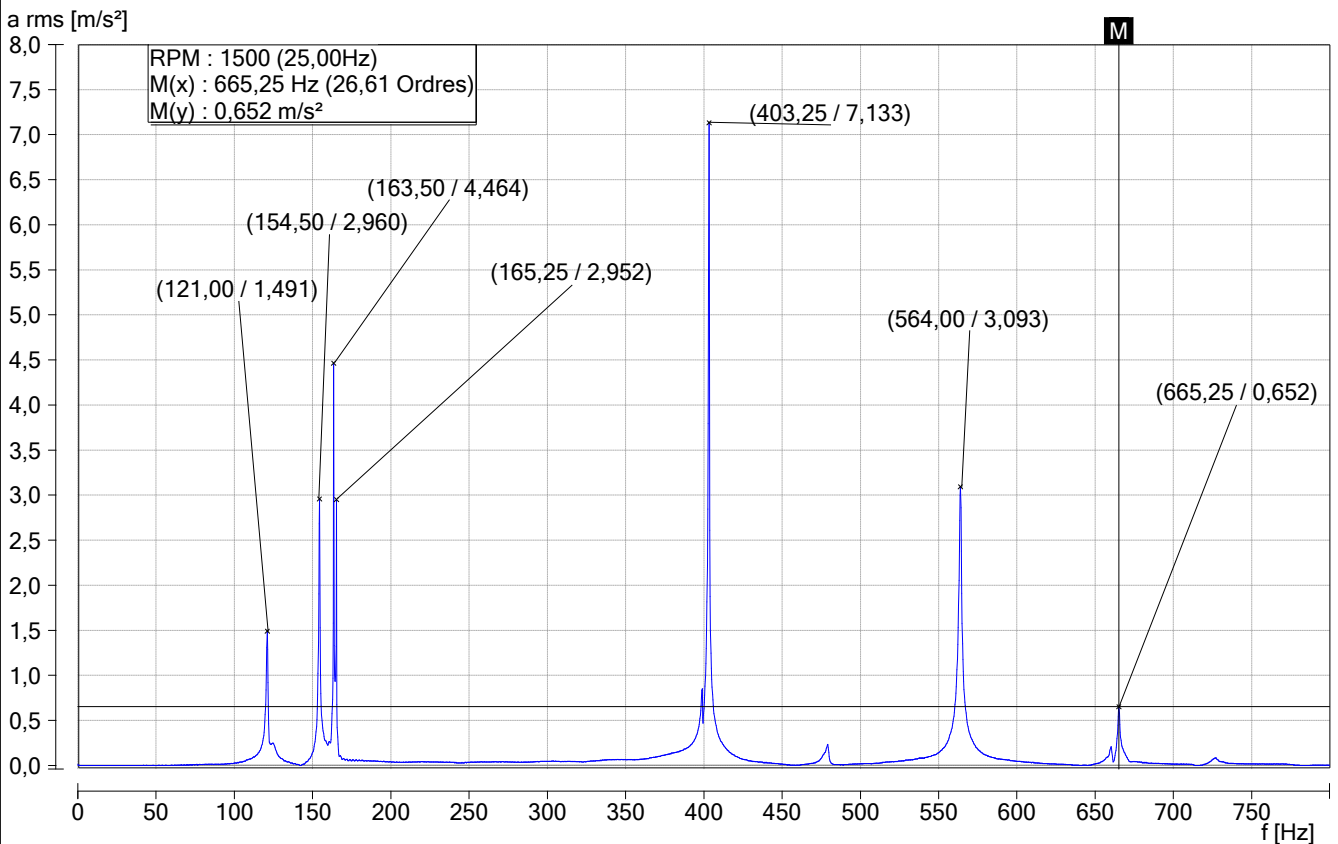


FEI



Curs. Principal X [Hz] = 665,25
 Y [m/s²] = 0,652
 Curseur delta X [Hz] = Inactif
 Y [m/s²] = Inactif
 RPM = 1500

Voie #	A X [Hz]	Y [m/s²]
1	403,25	7,133
2	163,50	4,464
3	564,00	3,093
4	154,50	2,960
5	165,25	2,952
6	121,00	1,491
7	399,00	0,851
8	665,25	0,652
9	160,75	0,266
10	124,75	0,249